

Every little
step.



The Brant range of
freestanding home designs.

Brant.
DESIGN & BUILD

Kotuku 260.



Welcome to our Showhome

Get to know us

Brant Design and Build has been designing and building premium homes in Auckland for over 30 years. We are delighted to be part of the Auranga journey and to showcase our new showhome which has been designed as a modern take on the classic Villa.

Kotuku 260 offers a flexible floor plan with 4 bedrooms, study/nursery upstairs and open plan kitchen/dining/living downstairs. A well proportioned design with great family living in mind.

We embrace sustainable building practices including recycling on site and the use of higher performing products in every build.

We also offer this showhome as an eHaus PassivHaus bringing you incomparable warmth, comfort, healthy living and energy efficiency.

Our Specifications



Exterior

Bagged cavity brick system (ground floor)
Board and batten (first floor)
Metalcraft Espan 460 roof

Living area

Engineered oak timber flooring
Tongue and groove feature wall
Gas fireplace with window seating either side
2.7m stud
Indoor/outdoor flow to multiple entertaining areas

Kitchen

Designer kitchen with separate scullery
Bosch appliances complete with wine fridge
Granite or engineered stone benchtops
Blum drawer system
Feature lighting
Engineered oak timber flooring

Upstairs master bedroom

Luxury master suite with separate sitting area
Premium carpet with 11mm underlay
Walk in wardrobe with custom shelving
Tiled ensuite with designer fittings

Bedrooms

3 bedrooms with built in robes and custom shelving
Premium carpet with 11mm underlay

Study/Nursery

Built in storage with custom shelving
Premium carpet with 11mm underlay

Family bathroom

Generous family bathroom with double shower and separate bath
Tiled bathroom with designer fittings

Entrance Way

Double height entrance way with tongue and groove panelling.
Extra storage
Security alarm
Keyless entry
Feature lighting

Extras

German designed ventilation system
Thermally broken aluminium joinery
Electric vehicle charging station

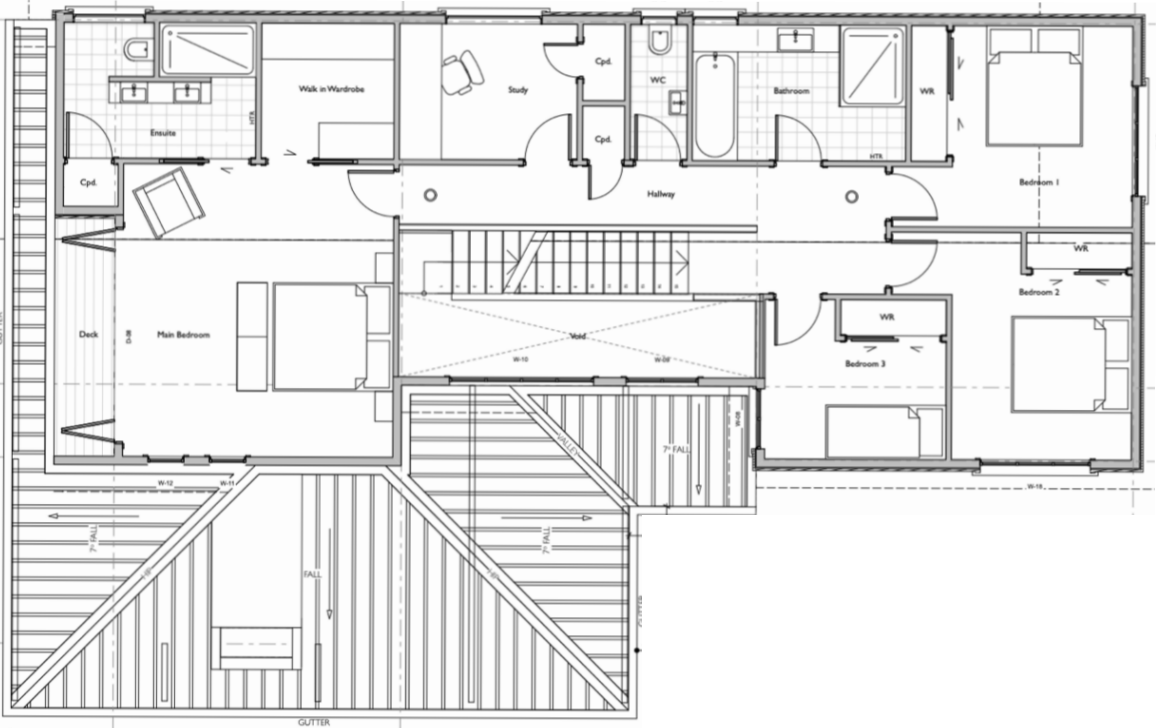
Priced From

\$1,179,000

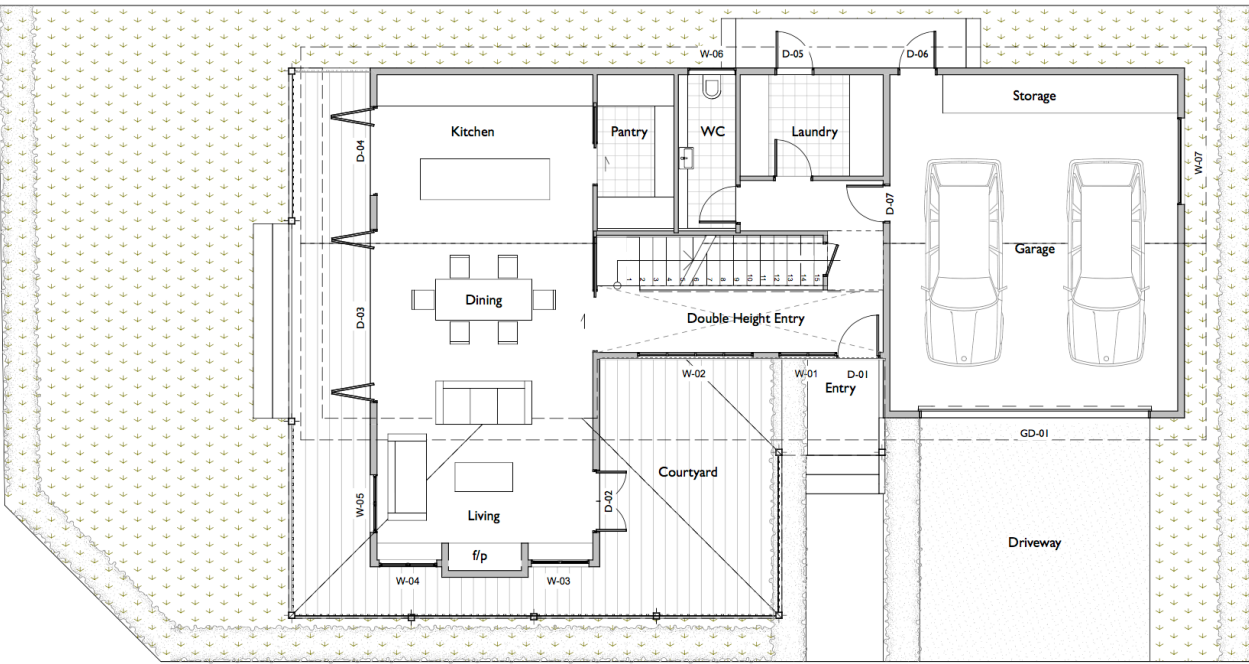
Brant.
DESIGN & BUILD

Floorplans.

First Floor



Ground Floor



Passivhaus features

Temperature Moisture Air Quality Energy Efficient



eHaus
accelerating the way we build

You can call us today to arrange your free consultation on 0800 856 486 or 0212466446 or email info@branthomes.co.nz

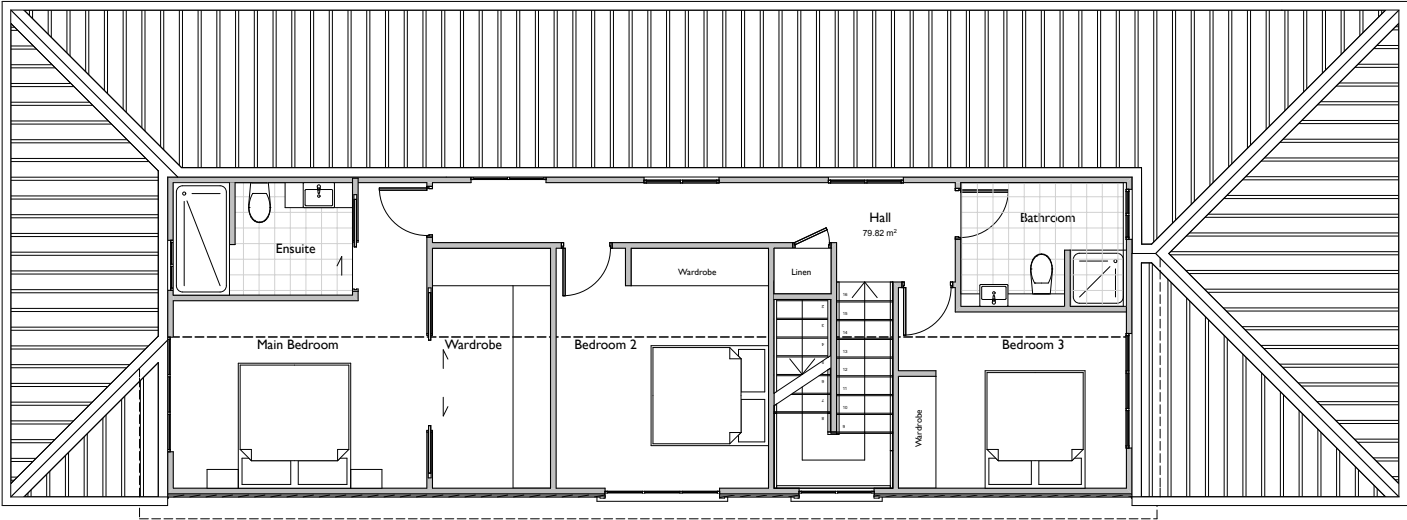
You can also visit our website or social media for more information
www.branthomes.co.nz
[@branthomesnz](https://www.instagram.com/branthomesnz)

Kotuku 193.



Floorplans.

First Floor



Welcome to Kotuku 193

Get to know us

Brant Design and Build has been designing and building premium homes in Auckland for over 30 years and we are delighted to be part of the Auranga journey.

At Brant we embrace sustainable building practices and promote the use of higher performing products in every build.

Kotuku 193 showcases a modern take on the classic Villa. The floorplan is flexible allowing for up to 4 bedrooms upstairs and generous living/dining spaces downstairs or create a further lounge area/tv room upstairs. The design includes 2 bathrooms, a separate laundry room and plenty of storage.

Our Specifications



Exterior

Vertical shiplap, long run colorsteel, or linea weatherboard options
Colorsteel long run roof

Living area

Engineered oak timber flooring
2.7m stud height
Separate study nook

Kitchen

Kitchen with options for walk in pantry
Fisher & Paykel, Bosch or Miele appliances
Granite or engineered stone benchtops
Blum drawer system
Feature lighting
Engineered oak timber flooring

Upstairs master bedroom

Spacious master suite with separate sitting area
Premium carpet with 11mm underlay
Walk in wardrobe with custom shelving
Tiled ensuite with designer fittings

Bedrooms

3 bedrooms and study with built in robes and custom shelving
Premium carpet with 11mm underlay

Family bathroom

Generous family bathroom with separate shower and bath
Tiled bathroom with designer fittings

Entrance Way

Double height entrance way.
Feature lighting

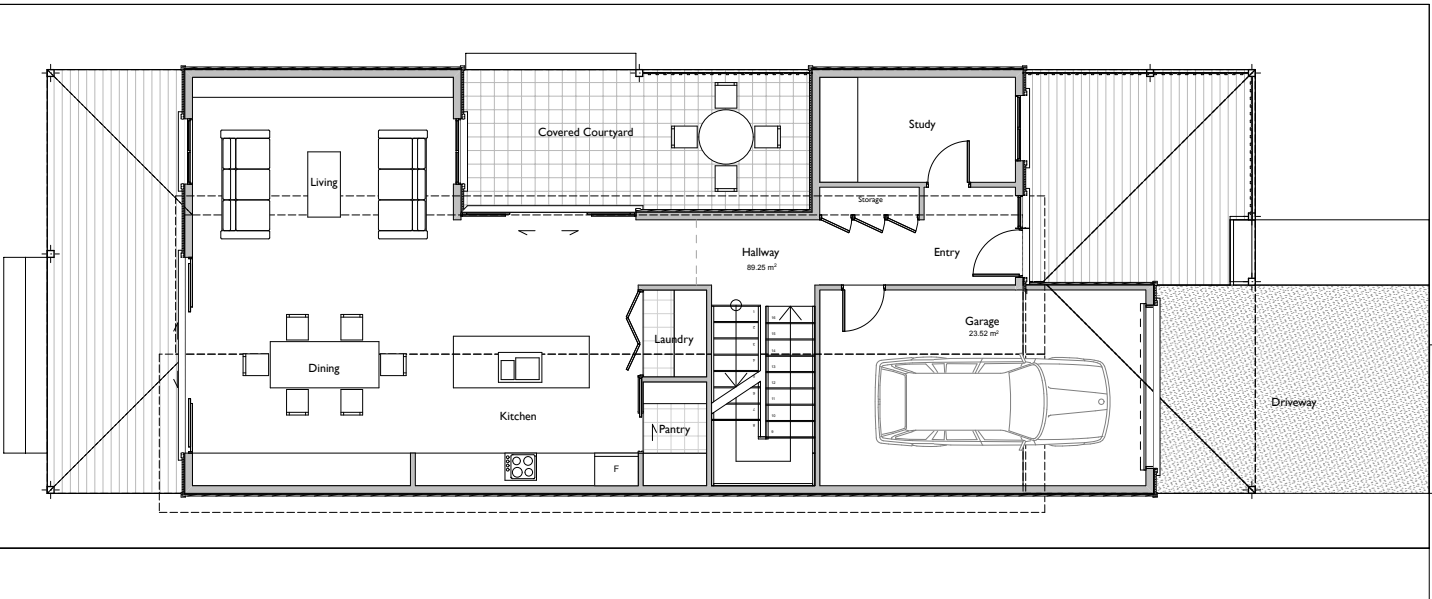
Other

Security alarm
Keyless entry
Electric vehicle charging station

Priced From

\$1,029,000

Ground Floor



You can call us today to arrange your free consultation on 0800 856 486 or 0212466446

or email info@branthomes.co.nz
You can also visit our website or social media for more information

www.branthomes.co.nz
[@branthomesnz](https://www.instagram.com/branthomesnz)



Kotuku 229.



Welcome to Kotuku 229

Get to know us

Brant Design and Build has been designing and building premium homes in Auckland for over 30 years and we are delighted to be part of the Auranga journey.

At Brant we embrace sustainable building practices and promote the use of higher performing products in every build.

Kotuku 229 showcases a modern take on the classic Villa. The floorplan is flexible allowing for up to 4 bedrooms upstairs and generous living/dining spaces downstairs or create a further lounge area/tv room upstairs. The design includes 2 ½ bathrooms, a separate laundry room and plenty of storage.

You can call us today to arrange your free consultation on 0800 856 486 or 0212466446

or email info@branthomes.co.nz

You can also visit our website or social media for more information

www.branthomes.co.nz

[@branthomesnz](#)

Our Specifications



Exterior
Vertical shiplap, long run colorsteel, or linea weatherboard options
Colorsteel long run roof

Living area
Engineered oak timber flooring
2.7m stud height
Separate study nook

Kitchen
Kitchen with options for walk in pantry
Fisher & Paykel, Bosch or Miele appliances
Granite or engineered stone benchtops
Blum drawer system
Feature lighting
Engineered oak timber flooring

Upstairs master bedroom
Spacious master suite with separate sitting area
Premium carpet with 11mm underlay
Walk in wardrobe with custom shelving
Tiled ensuite with designer fittings

Bedrooms
4 bedrooms with built in robes and custom shelving
Premium carpet with 11mm underlay

Family bathroom
Generous family bathroom with separate shower and bath
Tiled bathroom with designer fittings

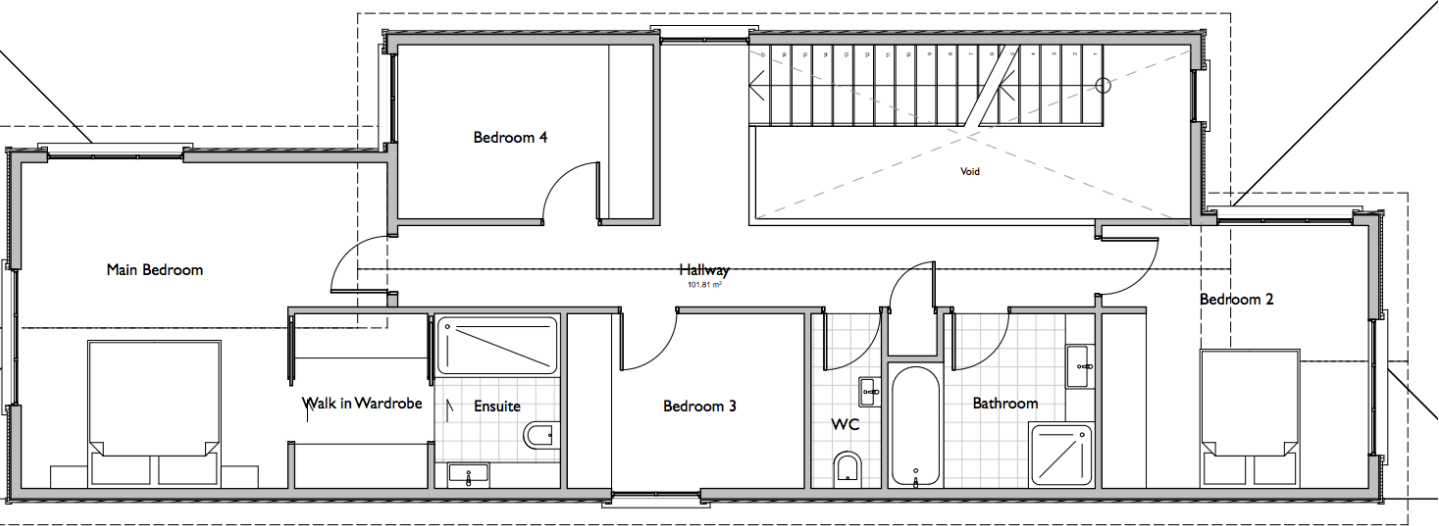
Entrance Way
Double height entrance way.
Feature lighting

Priced From
\$1,049,000

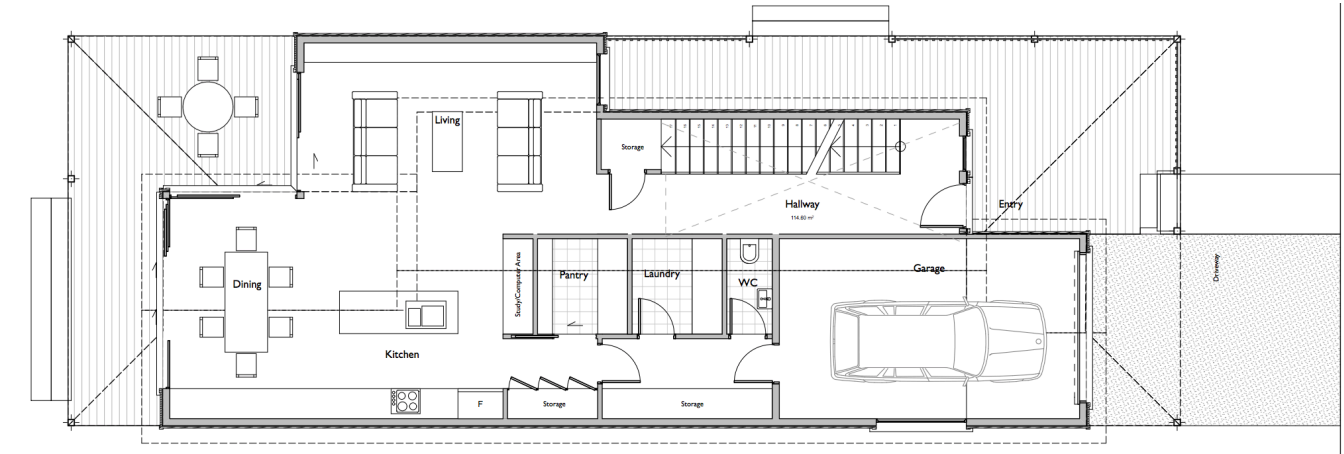


Floorplans.

First Floor



Ground Floor

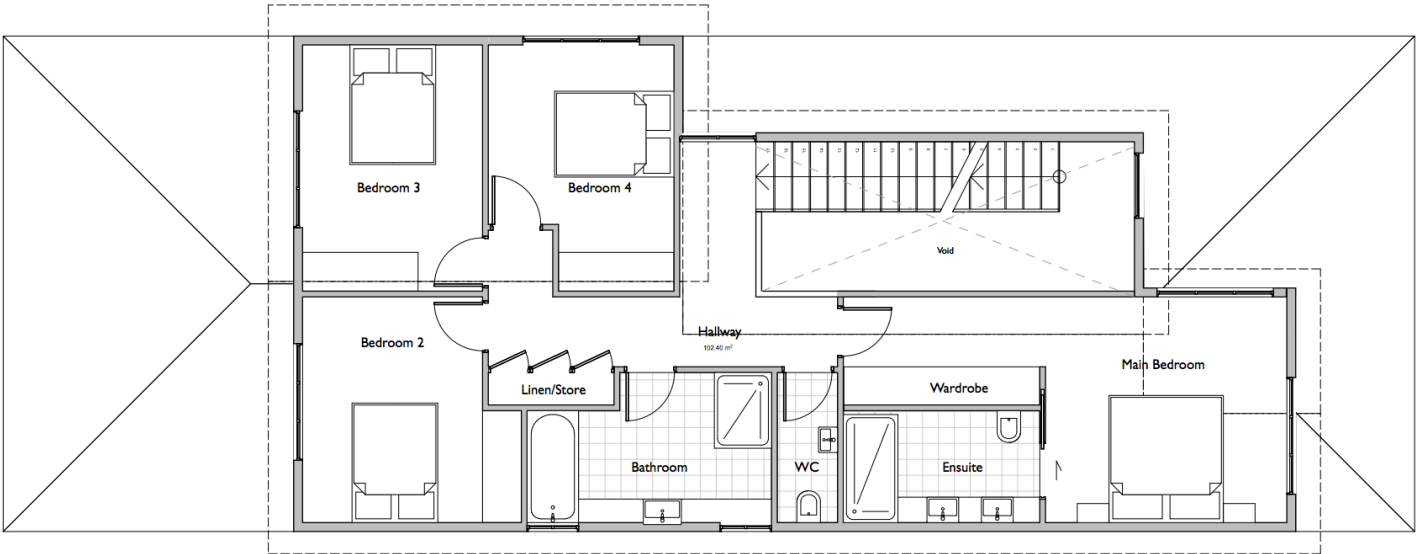


Kotuku 218.

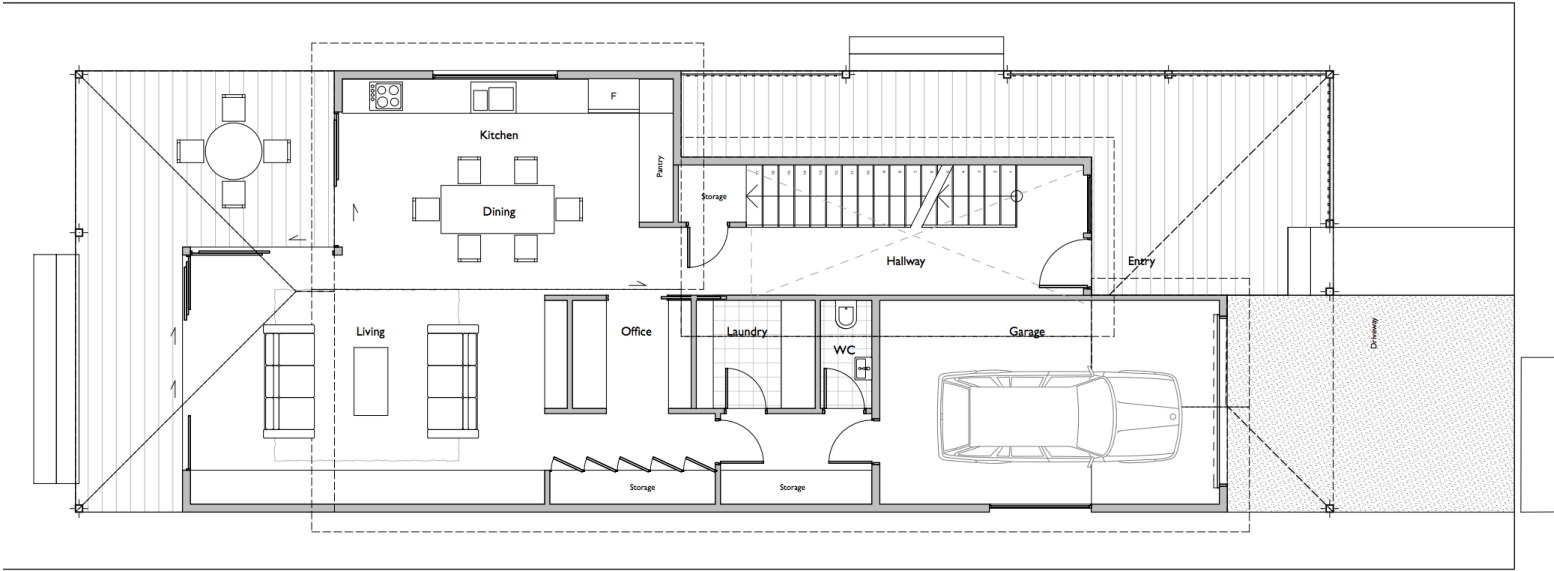


Floorplans.

First Floor



Ground Floor



Welcome to Kotuku 218

Get to know us

Brant Design and Build has been designing and building premium homes in Auckland for over 30 years and we are delighted to be part of the Auranga journey.

At Brant we embrace sustainable building practices and promote the use of higher performing products in every build.

Kotuku 218 showcases a modern take on the classic Villa. The floorplan is flexible allowing for up to 4 bedrooms upstairs and generous living/dining spaces downstairs or create a further lounge area/tv room upstairs. The design includes 2 ½ bathrooms, a separate laundry room and plenty of storage.

You can call us today to arrange your free consultation on 0800 856 486 or 0212466446

or email info@branthomes.co.nz
You can also visit our website or social media for more information

www.branthomes.co.nz
[@branthomesnz](https://www.instagram.com/branthomesnz)

Our Specifications



Exterior
Vertical shiplap, long run colorsteel, or linea weatherboard options
Colorsteel long run roof

Living area
Engineered oak timber flooring
2.7m stud height
Separate study nook

Kitchen
Kitchen with options for walk in pantry
Fisher & Paykel, Bosch or Miele appliances
Granite or engineered stone benchtops
Blum drawer system
Feature lighting
Engineered oak timber flooring

Upstairs master bedroom
Spacious master suite with separate sitting area
Premium carpet with 11mm underlay
Walk in wardrobe with custom shelving
Tiled ensuite with designer fittings

Bedrooms
3 bedrooms with built in robes and custom shelving
Premium carpet with 11mm underlay

Family bathroom
Generous family bathroom with separate shower and bath
Tiled bathroom with designer fittings

Entrance Way
Double height entrance way.
Feature lighting

Other
Security alarm
Keyless entry
Electric Vehicle charging station

Priced From

\$1,044,000



Option 2